

ITE Northeastern District Meeting - Annual Luncheon

WELCOME:

Bill McMenamin, P.E., Meeting Chair



Bill is the Deputy Director of Transportation Services at Greenman-Pedersen, Inc. in Babylon, NY, with 15 years of transportation design experience. He currently serves on the Executive Board of the ITE's Metropolitan Section of New York and New Jersey, having served as Section President in 2011.

KEYNOTE ADDRESS:

Richard T. Hammer, Chief of Staff/Assistant Commissioner
NJDOT Capital Program Management



Rick is an engineering graduate of Rutgers University, College of Engineering and has over 28 years of experience at NJDOT. He is responsible for Design Services, Project Management, Right of Way and Access Management, Capital Program Support, Construction and Materials. Rick's duties also include the management and delivery of the Department's annual capital construction program and state bridge and roadway infrastructure management.

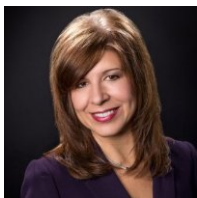
STATE OF ITE:

John J. Kennedy, P.E., PTOE
Vanasse Hangen Brustlin, Inc.



John is the co-founder of VHB, a multi-disciplinary consulting firm that currently employs more than 900 professionals, 90 of which are members of ITE. He has 40+ years of active professional experience as a traffic engineer and has been active in ITE for most of that time, ranging from elected leadership positions at the Chapter, Section, District and International Levels, committee work, publication review, and service on the Coordinating Council, to coordinating International Meeting arrangements.

ITE INTERNATIONAL VP CANDIDATES:



Paula Flores Benway
ITE Northeastern District



Raymond E. Davis, III
ITE Western District

ANNUAL AWARDS



Our Immediate Past District Chair, Michael R. Wieszchowski, P.E., PTOE, Senior Traffic Engineer with Greenman-Pedersen, Inc. in Albany, NY will present this year's District Awards. Awards include: **Harvey B. Boutwell Distinguished Service Award**, **Section Award**, **Student Chapter Award** and **Student Paper Award**. This will be an exciting portion of the program, as the recipients have not been notified and will find out at during the luncheon.